

MODEL D12s



TECHNICAL SPECIFICATIONS



Small footprint, big sound. Benefiting from many of the technologies of our flagship subs, these sealed subs generate amazing performance in the smallest footprint. Low Q, shallow rolloff response geared for sound quality and smoothly integrating into the listening room. Also, a great choice for using multiple subs to optimize in room response and smooth out seat-to-seat variation. The smallest subwoofer in the series, yet packs enough punch to be certified THX Dominus using a pair of D12s subs. Power by our 1.5kW amplifier, all functions and safeties are controlled by a 48-bit data bath DSP and 32-bit ARM M4 Cortex processor, able to react in microseconds, powerful enough to slam. Ground up drivers developed by our team of engineers. Carbon fiber composite diaphragms, multiple aluminum shorting rings, massive magnets, multi-layer Nomex spiders and lightweight aluminum voice coil wire are the key ingredients - Proprietary nonlinear modeling techniques allow us to simulate all these components and then optimize for real world driver performance - free air and in box. Further refinement is done with the aid of Klippel laser measurements to dial things in. All D-Series subs share our 2.4" LCD touchscreen display and ability to control advance settings using our App.

BASIC

Dimensions (HxWxD)
448 x 420 x 450mm
17.6 x 16.5 x 17.7"

Weight
41.0 kg (90.2 lbs.)

Available finishes
Piano black

TECHNICAL

Alignment
Acoustic suspension

Amplifier
1.5kW rms short term

Display Interface
2.4" LCD color touchscreen

App
iOS and Android

Processor
32-bit Arm Cortex M4, double precision floating point math

DSP Engine
Ti DSP 48-bit data paths

Driver complement
300mm, Carbon fiber diaphragm
+/-30mm linear excursion

Reference sensitivity
92dB / 150mV/ 1.0m

Frequency Response

- THX EQ
20-289Hz (-6dB) / 16-330Hz (-10dB)

- Boost (Large Room) EQ
16-289Hz (-6dB) / 14-330Hz (-10dB)
- Cut (Small Room) EQ
25-289Hz (-6dB) / 19-330Hz (-10dB)

Inputs
(2) Balanced XLR
(2) Unbalanced RCA

Outputs
(2) Balanced XLR unbuffered
(2) Unbalanced RCA unbuffered

Parametric EQ
10-Band PEQ with 3 user presets

Low Pass filter
Bypass, 30-160Hz, slope 6,12,18,24dB/oct

Phase
Variable 0-270°

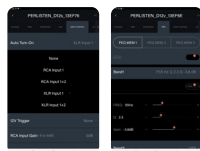
Polarity
Normal / inverted

Configurable Auto turn-on and 12v Trigger
XLR 1, XLR 1+2, RCA 1, RCA 1+2

Certification
THX Dominus



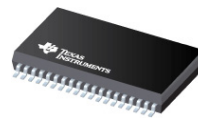
App Control
iOS and Android



Advanced APP User interface
Customizable turn-on controls and input selection, multiple PEQ's with presets.

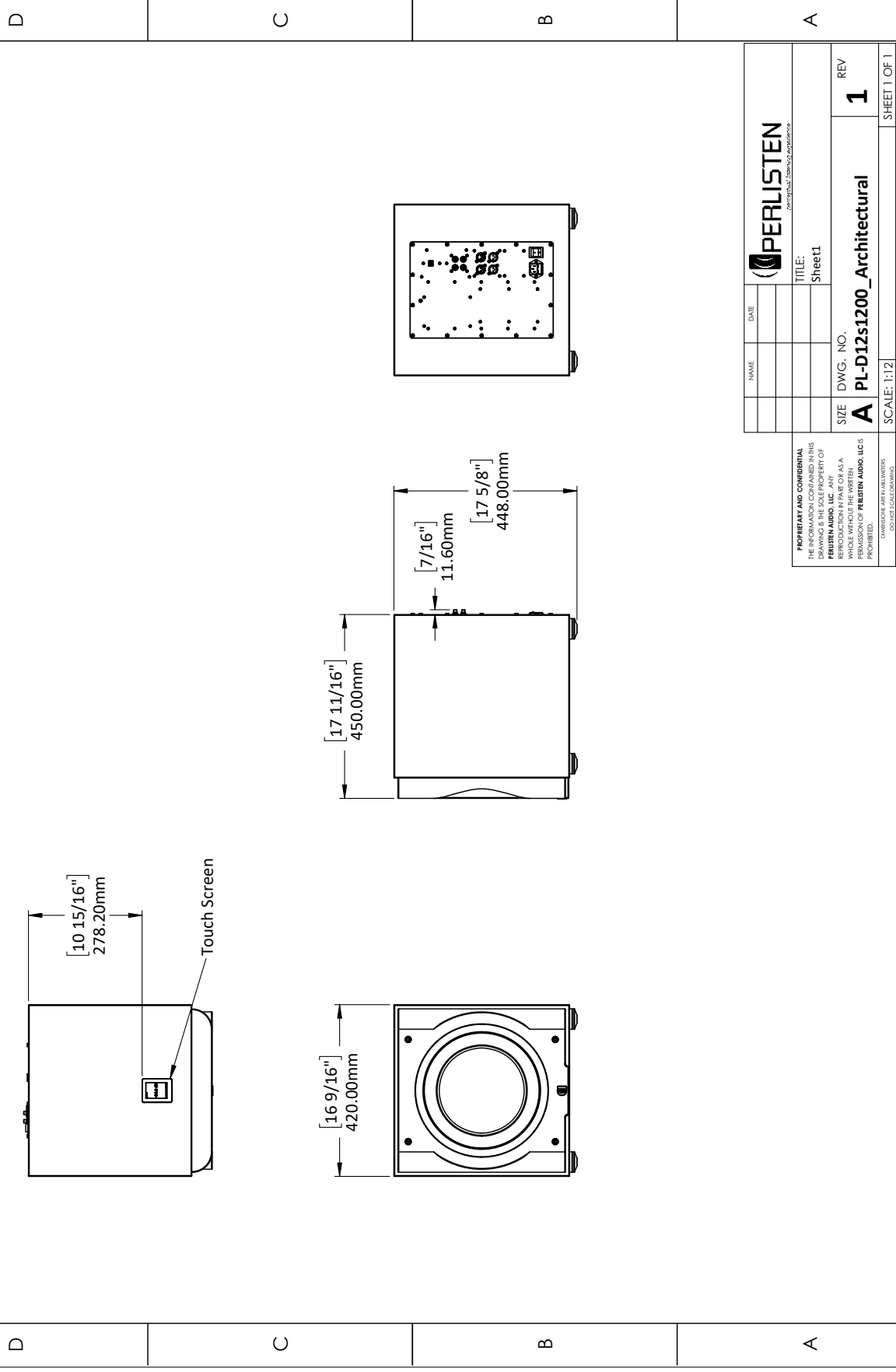


Processor
32-bit ARM Cortex M4



DSP Engine
48-bit data paths

REVISIONS		DATE
REV.	DESCRIPTION	
1	Initial Release	4/11/2021



NAME	DATE	 <small>PERLISTEN AUDIO, LLC</small>
TITLE:		SIZE DWG. NO. REV A PL-D12s1200_Architectural 1
Sheet1		
SCALE: 1:12		SHEET 1 OF 1

PROPRIETARY AND CONFIDENTIAL
 THE INFORMATION CONTAINED IN THIS DRAWING IS THE SOLE PROPERTY OF PERLISTEN AUDIO, LLC. ANY REPRODUCTION OR TRANSMISSION OF THIS DRAWING WITHOUT THE WRITTEN PERMISSION OF PERLISTEN AUDIO, LLC IS PROHIBITED.
DRAWINGS ARE IN MILLIMETERS UNLESS OTHERWISE NOTED